

# NCAR/UCAR/UCP - Organization Tree

Rev 7/23/2013 BGS  
(change to Phase 2b)

Acronyms must be unique

**Level 100 (Highest Institutional Reporting/Rollup)**

UCAR  
University Corp For  
Atmospheric Research

**Level 200**

NCAR  
National Center for  
Atmospheric Research

UCP  
UCAR Community  
Programs

UCARPRES  
UCAR President's  
Office

FANDA  
Finance and  
Administration

**Level 300**

NESL  
NCAR Earth  
System Lab

NCARDIR  
NCAR Directorate

VSP  
Visiting Scientist  
Programs

UCPDIR  
UCP Directorate

COMM  
Communications

BF  
Budget & Finance

VPFA  
VP of F&A  
Office

RAL  
Research  
Applications Lab

DLS  
Digital Learning  
Sciences

GOV  
Governance

SASS  
Safety & Site  
Services

EOL  
Earth Observing  
Laboratory

NSDL  
National Science  
Digital Library -  
Central Office

DEVPART  
Dev and  
Partnerships

IT  
Information  
Technology

CISL  
Comp and Info  
Systems Lab

COSMIC  
Constellation Obs Sys  
for Meteorology  
Ionosphere & Climate

UNIVREL  
University  
Relationships

FMS  
Facilities Mgmt &  
Sustainability

HAO  
High Altitude  
Observatory

JOSS  
Joint Office for  
Science Support

SOARS  
Sig Opp in Atmos  
Research &  
Science

SPARKAO  
Spark  
Administrative  
Office

OGC  
Office of General  
Council

Moved from FandA

CON  
Contracts

Remove BS,  
consolidate employees  
under CON, move CON  
under FandA

**Level 400**

GLOBE  
Global Learning &  
Observations to  
Benefit the Environ

COMET  
THE COMET  
PROGRAM

UNIDATA  
Unidata Program  
Center

HR  
Human Resources

TREAS  
Treasury

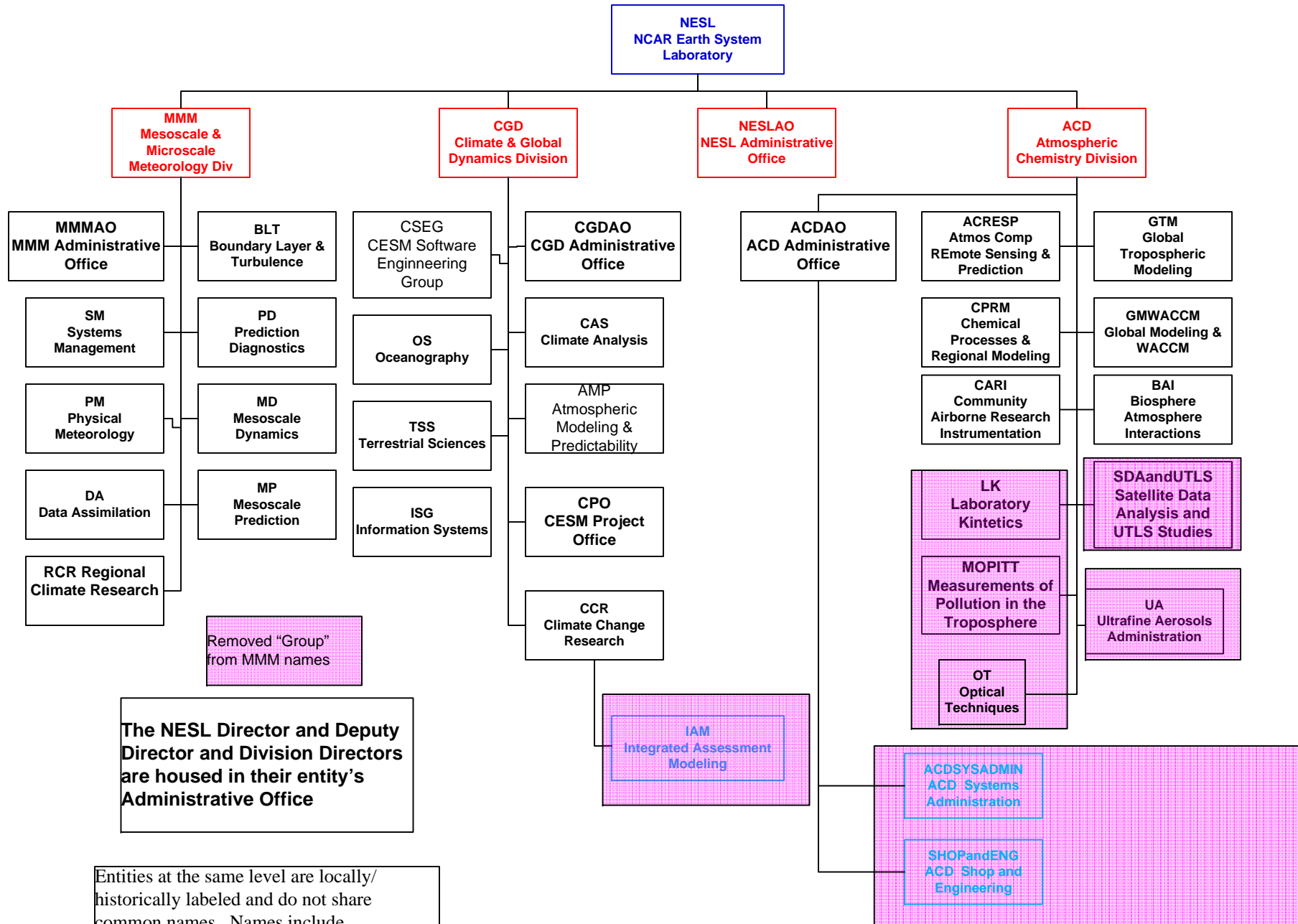
Entities at the same level are locally/historically labeled and do not share common names. Names include laboratories, observatories, programs, centers, departments, offices, etc and are not indicative of the level.

Level 300

Level 400

Level 500

Level 600



**Level 300**

**RAL  
Research  
Applications  
Laboratory**

**Level 400**

**AAP  
Aviation Applications  
Program**

**NSAP  
National Security  
Applications Program**

**HAP  
Hydrometeorology  
Applications Program**

**RALAO  
RAL Administrative  
Office**

**WSAP  
Weather Systems  
Assessment Program**

**JNT  
Joint Numerical  
Testbed**

**CSAP  
Climate Science  
Applications Program**

**The RAL Director and  
Deputy Director are housed  
in RALAO. All other  
directors/managers are  
housed in their entities.**

Entities at the same level are locally/  
historically labeled and do not share  
common names. Names include  
laboratories, observatories, programs,  
centers, departments, offices, etc and are  
not indicative of the level.

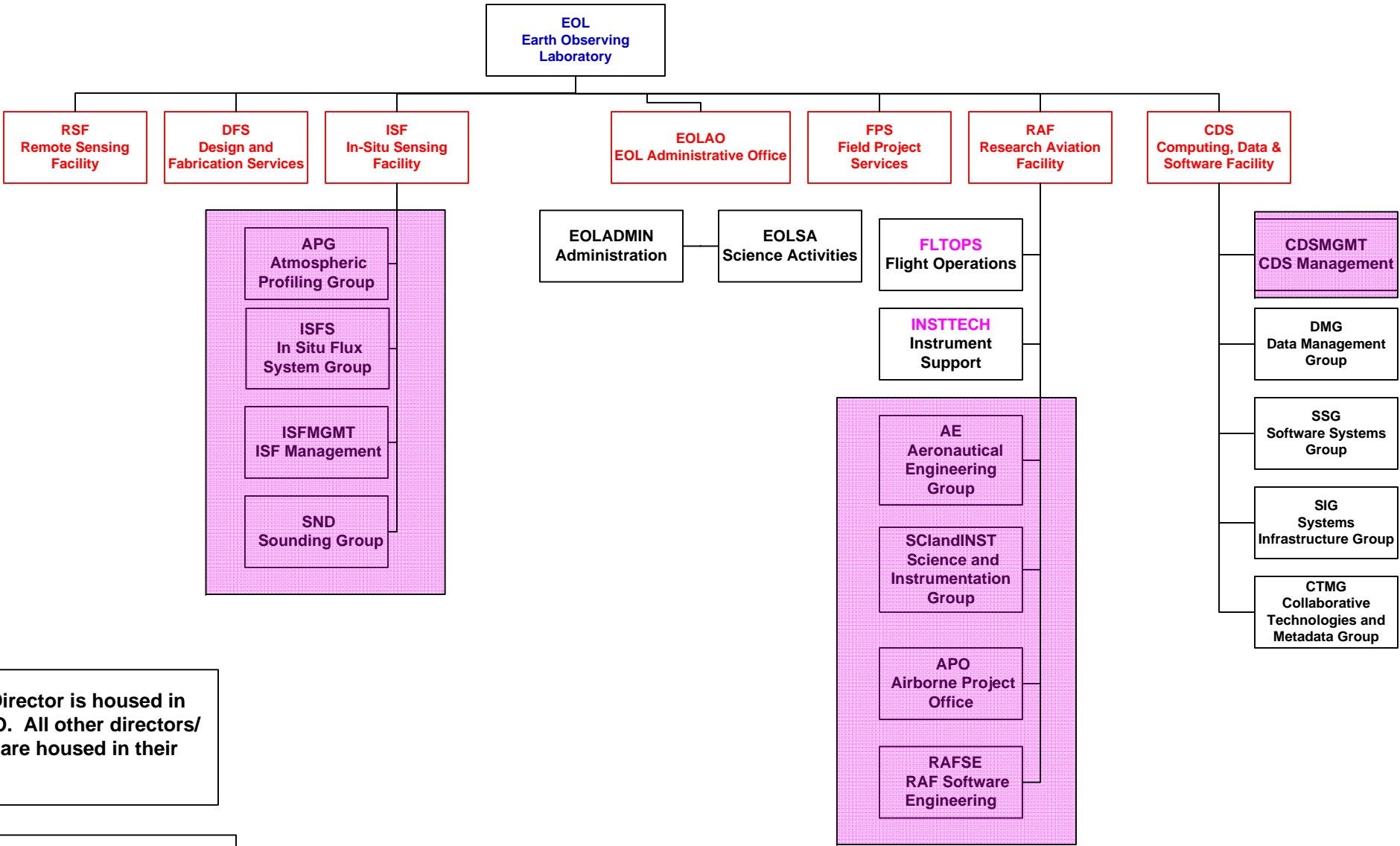
Level 300

Level 400

Level 500

The EOL Director is housed in the EOLAO. All other directors/managers are housed in their entities.

Entities at the same level are locally/historically labeled and do not share common names. Names include laboratories, observatories, programs, centers, departments, offices, etc and are not indicative of the level.



Level 300

Level 400

Level 500

Level 600

CISL  
Computational and  
Information Sys Lab

TDD  
Technology  
Development  
Division

IMAGE  
Institute for  
Mathematics Applied  
to the Geosciences

CISLAO  
CISL Administrative  
Office

OSD  
Operations and  
Services Division

ASAP  
Application  
Scalability and  
Performance Group

OSG  
Outreach Services  
Group

VETS  
Visualization &  
Enabling Tech  
Section

TNT  
Turbulence  
Numerics Team

GSP  
Geophysical  
Statistics Program

DARES  
Data Assimilation  
Research Section

RISC  
Reg. Integrated  
Sciences Collective

CMG  
Computational Math  
Group

NETS  
Network Engineering  
and Telecom Section

ESS  
Enterprise Services  
Section

DSS  
Data Support  
Section

HSS  
High-end Services  
Section

Cheyenne  
Operations Section

USS  
User Services  
Section

DSG  
Distributed Services  
Group

ISGB  
Infra. Support Group-  
Boulder

SEG  
Security Engineering  
Group

WEG  
Web Engineering  
Group

WSST  
Workstation Support  
Services

SCSG  
Supercomputer  
Systems Group

MSSG  
Mass Storage  
Systems Group

DASG  
Data Analysis  
Services Group

CASG  
Cheyenne Admin.  
Support Group

ISGC  
Infra Support Group -  
Cheyenne

CSG  
Consulting Services  
Group

The CISL Director is housed in the CISLAO. All other directors/managers are housed in their entity.

Entities at the same level are locally/historically labeled and do not share common names. Names include laboratories, observatories, programs, centers, departments, offices, etc and are not indicative of the level.

Level 300

HAO  
High Altitude  
Observatory

Level 400

AIM  
Atmosphere,  
Ionosphere, and  
Magnetosphere

LSV  
Long-term Solar  
Variability

STSW  
Solar Transients &  
Space Weather

HAOAO  
HAO  
Administrative  
Office

IG  
Instrumentation  
Group

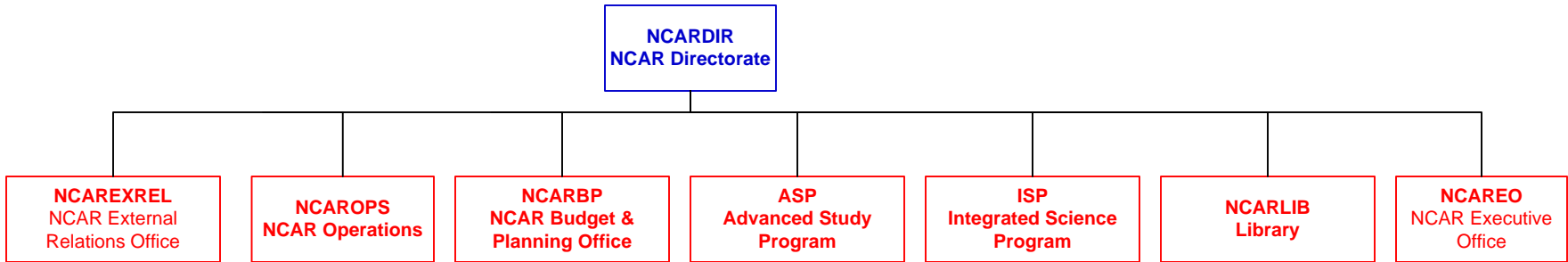
MLSO  
Mauna Loa Solar  
Observatory

The HAO Director and Deputy  
Director are housed in HAOAO.  
All other managers are housed  
in their entities.

Entities at the same level are locally/  
historically labeled and do not share  
common names. Names include  
laboratories, observatories, programs,  
centers, departments, offices, etc and are  
not indicative of the level.

Level 300

Level 400

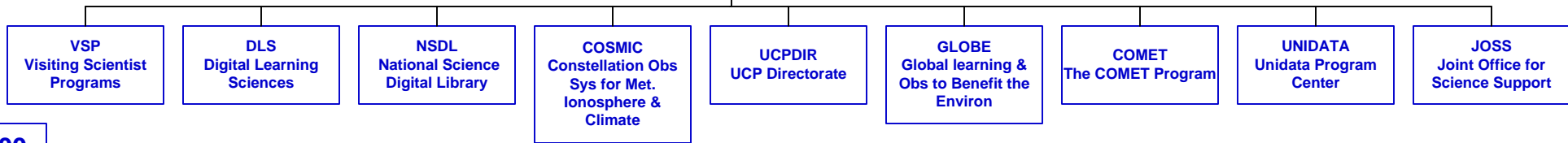


The NCAR DIR and Deputy DIR is housed in NCAEO. All other directors/managers are housed in their entities.

Entities at the same level are locally/historically labeled and do not share common names. Names include laboratories, observatories, programs, centers, departments, offices, etc and are not indicative of the level.

Level 200

UCP  
UCAR Community  
Programs



Level 300

The UCP Director is housed in the UCPDIR. All other directors/managers are housed in their entity.

Entities at the same level are locally/historically labeled and do not share common names. Names include laboratories, observatories, programs, centers, departments, offices, etc and are not indicative of the level.



Level 300

Level 400

Level 500

Remove BS, consolidate  
employees under CON, nove  
CON under FandA  
  
OGC moved to UCAR{RES

The VP is housed in FANDAVP.  
All other directors/managers  
are housed in their entities.

Entities at the same level are locally/  
historically labeled and do not share  
common names. Names include  
laboratories, observatories, programs,  
centers, departments, offices, etc and are  
not indicative of the level.

